

THE NSW GOVERNMENT HAS ADOPTED 13 STATE-WIDE TARGETS FOR NATURAL RESOURCES MANAGEMENT. THIS IS THE NRC'S REPORT ON PROGRESS TOWARDS THIS TARGET.

# TARGET

THAT BY

# 2015:



THERE IS AN INCREASE IN THE EXTENT OF NATIVE VEGETATION ACROSS THE STATE

THERE IS AN IMPROVEMENT IN THE CONDITION OF NATIVE VEGETATION ACROSS THE STATE.

## PROGRESS



Baselines have been established for 2006. This means we now have a reliable measurement by which to measure future change. Continued investment in monitoring and evaluation programs may allow evaluation of trends in both extent and condition of native vegetation (and therefore reporting on targets) by 2015.

There has been no net change in the extent of woody native vegetation (trees and shrubs) across NSW between 2002-2008. A trend in the extent of native non-woody vegetation (grasses) cannot currently be reliably reported due to available technologies and variability in land management practices.

A trend in condition of native vegetation cannot be reported with the information currently available.

### KEY FIGURES

#### EXTENT OF VEGETATION IN 2006, ACROSS THE STATE

Native woody vegetation covered **19-23%\*** of the state. Native non-woody vegetation covered **40-64%\*** of the state.

Between January 2006 and June 2008 under various Government initiatives:

**3,654,264** hectares of vegetation were conserved, managed or restored

**8,923**

hectares were approved for clearing under the Native Vegetation Act 2003, Native Vegetation and Conservation Act 1997 and the Plantations and Reafforestation Act 1999

#### CONDITION OF VEGETATION IN 2006, ACROSS THE STATE

**68%** of vegetation was native

**32%** of vegetation cover was non-native

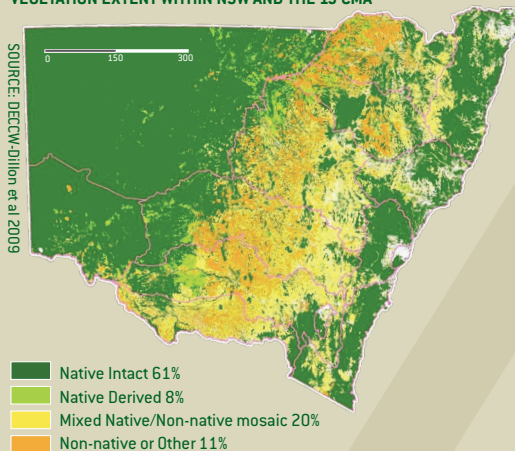
# MORE DETAIL

## EXTENT OF VEGETATION

### IN 2006, VEGETATION WAS:

- 61% Native Intact
- 8% Native Derived
- 20% Mixed Native/Non-native
- 11% Non-native

VEGETATION EXTENT WITHIN NSW AND THE 13 CMA



## CONDITION OF VEGETATION

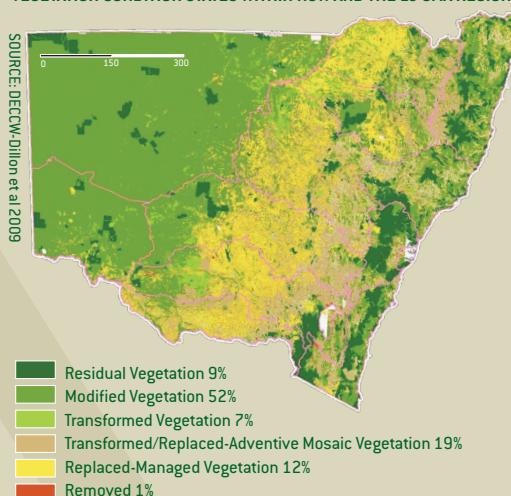
### IN 2006, NATIVE VEGETATION COVER WAS 68%:

- 9% was Residual
- 52% was Modified
- 7% was Transformed

### IN 2006, NON-NATIVE VEGETATION WAS 32%

- 19% was Transformed/Replaced-Adventive Mosaic
- 12% was Replaced-Managed
- 1% was Removed

VEGETATION CONDITION STATES WITHIN NSW AND THE 13 CMA REGIONS



## REGIONAL MANAGEMENT ACTIONS

Important management actions are being implemented by CMAs in the regions to improve native vegetation. Examples of these actions include:

- In the Lower Murray Darling and Western CMAs approximately 130,000 hectares have been conserved via the creation of permanent reserves or Property Vegetation Plans (PVPs)
- The Murray, Lachlan and Murrumbidgee CMAs known for their wheat and sheep production have conserved, improved or restored over 60,000 hectares of native vegetation
- In the Northern and Southern Rivers CMAs over 18,000 hectares have been protected including over 1,000 hectares of environmental corridors

## ABOUT THE NRC

The Natural Resources Commission (NRC) provides the NSW Government with independent, objective and practical advice on natural resources management issues.

As part of our obligations, the NRC is tasked with reporting progress towards the natural resource management (NRM) targets adopted by the NSW Government and embedded in the NSW State Plan.

## HOW WAS THE INFORMATION COLLATED?

To evaluate progress, information was collated and evaluated from state and federal agencies including NSW Department of Environment, Climate Change and Water and Catchment Management Authorities (CMAs). The results of the analysis were independently analysed and verified by a panel of recognised experts in NRM.

This Snapshot presents the key findings of the assessment of progress made towards the stated target. Additional information is provided in a Technical Report and the Reporting on Targets: Native Vegetation Extent and Condition technical analysis document. For copies of these documents or additional information go to [www.nrc.nsw.gov.au](http://www.nrc.nsw.gov.au) or contact (02) 8227 4300.